



**Lakedale Court Waterside, Dartford**  
**Kent DA1 4GD**  
**£350,000**

GUIDE PRICE £350,000.00 - £400,00.00

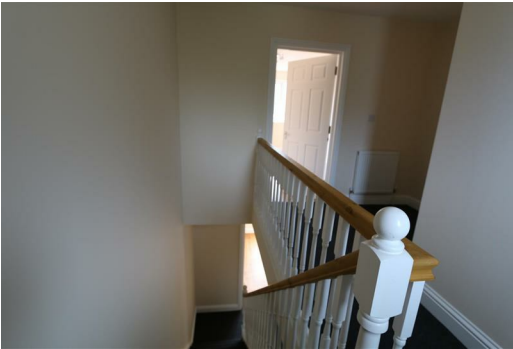
**BE THE FIRST TO OWN THIS STUNNING & SPACIOUS THREE BEDROOM MODERN TOWN HOUSE  
ON THIS NEW PRIVATE DEVELOPMENT**

The property offers a wealth of features including private parking, modern design, two terraces,  
brand new kitchen & bathrooms and neutral decor.

The property is located in the heart of Crayford with it's array of shops, bars, restaurants, supermarkets & great  
transport links. Set over three floors, this new home also offers fantastic living space.

Viewing by appointment only - please call for further information and to book.

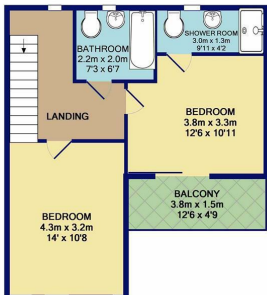




GROUND FLOOR  
APPROX. FLOOR  
AREA 41.1 SQ.M.  
(442 SQ.FT.)



1ST FLOOR  
APPROX. FLOOR  
AREA 43.1 SQ.M.  
(464 SQ.FT.)



2ND FLOOR  
APPROX. FLOOR  
AREA 43.0 SQ.M.  
(463 SQ.FT.)

TOTAL APPROX. FLOOR AREA 127.2 SQ.M. (1369 SQ.FT.)  
Whilst every attempt has been made to ensure the accuracy of the floor plan contained herein, measurements of doors, windows, rooms and any other items are approximate and no responsibility is taken for any error, omission, or misstatement. This plan is for illustrative purposes only and should be used as such by any prospective purchaser. The services, systems and appliances shown have not been tested and no guarantee as to their quality or efficiency can be given.  
Made with Metropix ©2019

